

Nu-Edge[®] SL

Cobalt Chromium Brackets

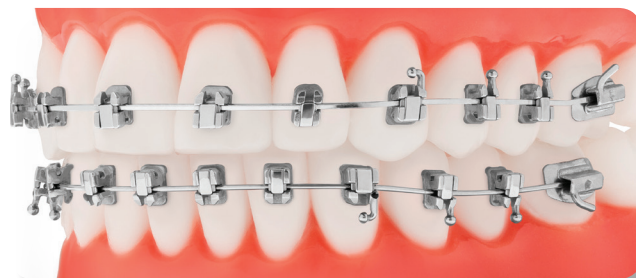
The proven CoCr performance of Nu-Edge brackets now available in a self-ligating design.

Strength Meets Biocompatibility

Cobalt chromium is biocompatible for nickel sensitive patients and offers superior strength to prevent slot collapse due to occlusal forces.

Ligation Options

Hidden tie wings allow for traditional elastomeric ligation if needed. Metal ties can also be used due to the strategically placed auxiliary wire slot.

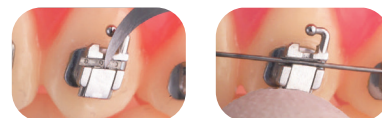


Robust Locking Mechanism

Once the slide is locked in place the archwire slot becomes a ridged tunnel preventing the bracket from being unseated.

This distinctive dumbbell mechanism provides an audible assurance that the archwire is locked into place. The slide is easily opened using a standard explorer and closed simply by applying finger pressure.

- 1 Opening Brackets**
To open, insert a standard explorer.
- 2 Locking Brackets**
To close, apply light gingival pressure.

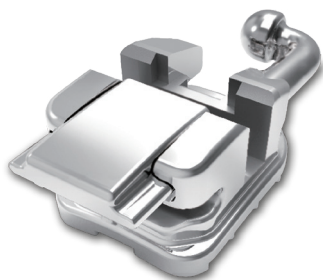


Nano Polishing Technology

Helps prevent bacterial adhesion, reduces friction and enhances surface smoothness for patient comfort.

Maze Base Design

The maze base is designed for optimal bond strength and unmatched adhesive retention during debonding.



Find out more at tportho.com
or call **800-348-8856**



Nu-Edge® Self-Ligating Mini Cobalt Chromium Brackets

MBT* McLaughlin, Bennett, Trevisi System

PATIENT KITS

Slot Size	With Hooks	
0.46mm (.018")	Cuspid/Bicuspid	293-291SL
0.56mm (.022")	Cuspid/Bicuspid	293-294SL

Kits contain 20 brackets.

MAXILLARY BRACKETS

	Slot Size	Left/Right	Bondable
Central	0.46mm (.018")	L	293-310SL
Torque +17°		R	293-311SL
Angulation + 4°	0.56mm (.022")	L	293-312SL
		R	293-313SL
Lateral	0.46mm (.018")	L	293-314SL
Torque +10°		R	293-315SL
Angulation + 8°	0.56mm (.022")	L	293-316SL
		R	293-317SL
Cuspid with Distal Hook	0.46mm (.018")	L	293-322SL
Torque -7°		R	293-323SL
Angulation +8°	0.56mm (.022")	L	293-324SL
		R	293-325SL
Bicuspid with Distal Hook	0.46mm (.018")	L	293-330SL
Torque - 7°		R	293-331SL
Angulation 0°	0.56mm (.022")	L	293-332SL
		R	293-333SL

Package of 5

MANDIBULAR BRACKETS

	Slot Size	Left/Right	Bondable
Anteriors	0.46mm (.018")	L/R	293-354SL
Torque -6°			
Angulation 0°	0.56mm (.022")	L/R	293-355SL
Cuspid with Distal Hook	0.46mm (.018")	L	293-360SL
Torque -6°		R	293-361SL
Angulation +3°	0.56mm (.022")	L	293-362SL
		R	293-363SL
1st Bicuspid with Distal Hook	0.46mm (.018")	L	293-268SL
Torque -12°		R	293-269SL
Angulation +2°	0.56mm (.022")	L	293-270SL
		R	293-271SL
2nd Bicuspid with Distal Hook	0.46mm (.018")	L	293-276SL
Torque -17°		R	293-277SL
Angulation +2°	0.56mm (.022")	L	293-278SL
		R	293-279SL

Package of 5

Nu-Edge® Self-Ligating Cobalt Chromium Brackets

Compatible with the Roth system: not endorsed by Dr. Roth

PATIENT KITS

Slot Size	With Hooks	
0.46mm (.018")	Cuspid/Bicuspid	293-106SL
0.56mm (.022")	Cuspid/Bicuspid	293-107SL

Kits contain 20 brackets.

MAXILLARY BRACKETS

	Slot Size	Left/Right	Bondable
Central	0.46mm (.018")	L	293-010SL
Torque +17°		R	293-011SL
Tip +5°	0.56mm (.022")	L	293-012SL
		R	293-013SL
Lateral	0.46mm (.018")	L	293-014SL
Torque +8°		R	293-015SL
Tip +9°	0.56mm (.022")	L	293-016SL
		R	293-017SL
Cuspid with Distal Hook	0.46mm (.018")	L	293-022SL
Torque 0°		R	293-023SL
Tip +11°	0.56mm (.022")	L	293-024SL
		R	293-025SL
Bicuspid with Distal Hook	0.46mm (.018")	L	293-098SL
Torque -7°		R	293-099SL
Tip 0°	0.56mm (.022")	L	293-100SL
		R	293-101SL

Package of 5

MANDIBULAR BRACKETS

	Slot Size	Left/Right	Bondable
Anteriors	0.46mm (.018")	L/R	293-050SL
Torque 0°			
Tip 0°	0.56mm (.022")	L/R	293-052SL
Cuspid with Distal Hook	0.46mm (.018")	L	293-058SL
Torque -11°		R	293-059SL
Tip +5°	0.56mm (.022")	L	293-060SL
		R	293-061SL
1st Bicuspid with Distal Hook	0.46mm (.018")	L	293-090SL
Torque -17°		R	293-091SL
Tip 0°	0.56mm (.022")	L	293-092SL
		R	293-093SL
2nd Bicuspid with Distal Hook	0.46mm (.018")	L	293-082SL
Torque -22°		R	293-083SL
Tip 0°	0.56mm (.022")	L	293-084SL
		R	293-085SL

Package of 5

*MBT is a registered trademark of 3M Unitek. TP Orthodontics version of the McLaughlin, Bennett and Trevisi prescription is not intended to be a duplication of, nor an endorsement by, these doctors and such endorsement is not implied by the use of this term.