

Pre-Finisher[®]

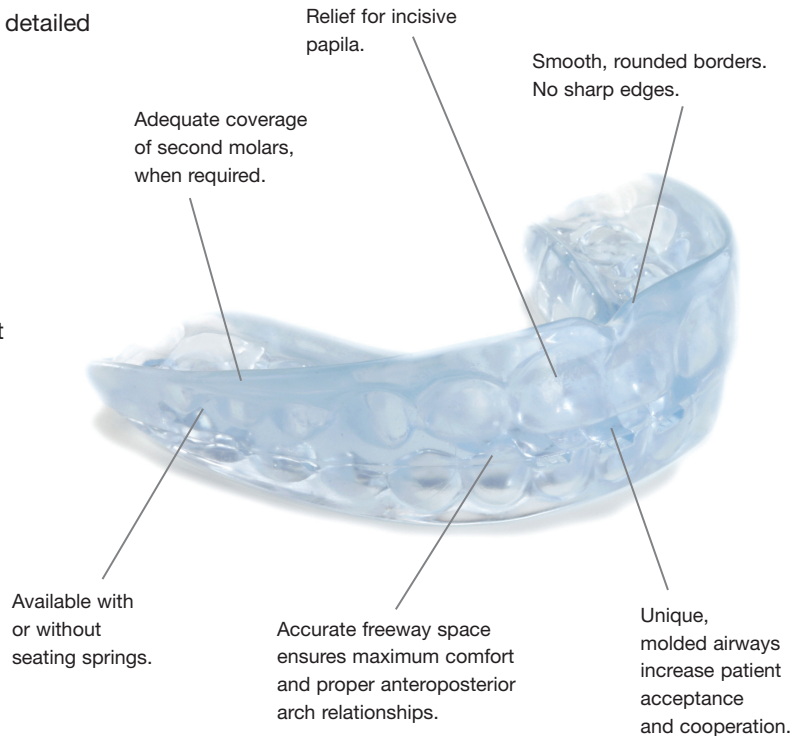
PREFORMED FINISHING APPLIANCE

Effortless Detailed Finishing

Why not let the Pre-Finisher appliance do the work of detailed finishing for you?

Patients can look forward to getting fixed appliances removed earlier, and you'll appreciate the final results without doing the demanding, intricate work. Nothing could be easier! Near the end of treatment, remove fixed appliances, measure, and select a Pre-Finisher appliance from your in-office inventory kit — no impressions required.

- No laboratory wait; immediate delivery to the patient
- Corrects and relates teeth in both arches simultaneously
- Aligns, rotates and closes spaces
- Sized in one-millimeter increments for precise fitting
- Results in 2-3 weeks
- Soft, resilient, phthalate-free plastic and smooth edges increase patient comfort
- Optional seating springs facilitate proper placement and retention
- Economical — only one appliance needed



Ordering Pre-Finisher Appliance Kits

Convincer Kits

(10 Assorted Sizes)	Plain	With Seating Springs
Nonextraction	190-010	190-110
Four Bicuspid Extraction	190-410	190-510
Two Upper Bicuspid Extraction	190-210	190-310

Standard Kits

(15 Assorted Sizes)	Plain	With Seating Springs
Nonextraction	190-015	190-115
Four Bicuspid Extraction	190-415	190-515
Two Upper Bicuspid Extraction	190-215	190-315

Thrift Kits

(20 Assorted Sizes)	Plain	With Seating Springs
Nonextraction	190-020	190-120
Four Bicuspid Extraction	190-420	190-520
Two Upper Bicuspid Extraction	190-220	190-320

Kits provide an immediate, balanced supply of Pre-Finisher Appliances.

Kits include a detailed instruction booklet for the orthodontist, a special millimeter ruler to facilitate size selection, a supply of patient instruction booklets and a convenient reorder form.

Ordering Individual Pre-Finisher Appliances

The last two digits of the order number indicate size of Pre-Finisher in millimeters.

Nonextraction Series

Can also be used on first molar extraction cases.

Plain			With Seating Springs		
190-040	190-047	190-054	190-140	190-147	190-154
190-041	190-048	190-055	190-141	190-148	190-155
190-042	190-049	190-056	190-142	190-149	190-156
190-043	190-050	190-057	190-143	190-150	190-157
190-044	190-051	190-058	190-144	190-151	190-158
190-045	190-052		190-145	190-152	
190-046	190-053		190-146	190-153	

Nineteen sizes (40 mm to 58 mm).

Two Upper Bicuspid Extraction Series

Plain			With Seating Springs		
190-244	190-249	190-254	190-344	190-349	190-354
190-245	190-250	190-255	190-345	190-350	190-355
190-246	190-251	190-256	190-346	190-351	190-356
190-247	190-252		190-347	190-352	
190-248	190-253		190-348	190-353	

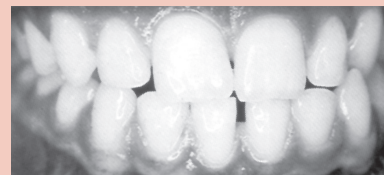
Thirteen sizes (44 mm to 56 mm).

Four Bicuspid Extraction Series

Plain			With Seating Springs		
190-444	190-450	190-456	190-544	190-550	190-556
190-445	190-451	190-457	190-545	190-551	190-557
190-446	190-452	190-458	190-546	190-552	190-558
190-447	190-453	190-459	190-547	190-553	190-559
190-448	190-454	190-460	190-548	190-554	190-560
190-449	190-455		190-549	190-555	

Seventeen sizes (44 mm to 60 mm).

Actual results achieved with use of the Pre-Finisher Appliance:



Before



After



Size, in millimeters (last two digits of part number) molded into each appliance.

Asian Pre-Finisher Appliances

Asian Pre-Finisher appliances are specially designed to address common Asian dental anatomy traits:

- Increased incisal mamelon ridge definition
- Decreased clinical crown length

Asian Nonextraction Series

Plain		
190-848	190-851	190-854
190-849	190-852	190-855
190-850	190-853	

Ten sizes (48 mm to 55 mm).

Asian Four Bicuspid Extraction Series

Plain		
190-644	190-649	190-654
190-645	190-650	190-655
190-646	190-651	190-656
190-647	190-652	190-657
190-648	190-653	

Fourteen sizes (44 mm to 57 mm).

For more information, go to tportho.com.

Australia	1 800 643 055
New Zealand	0 800 449 074
Singapore	800 6161 796
South Africa	+27 (0) 11 100 0956
United Kingdom	44 (0) 113 2539192
United States	800-348-8856